

# GVHQ 808

## BENTLEIGH FACADE

**\$579,790**







 4.0  2.0  2.0

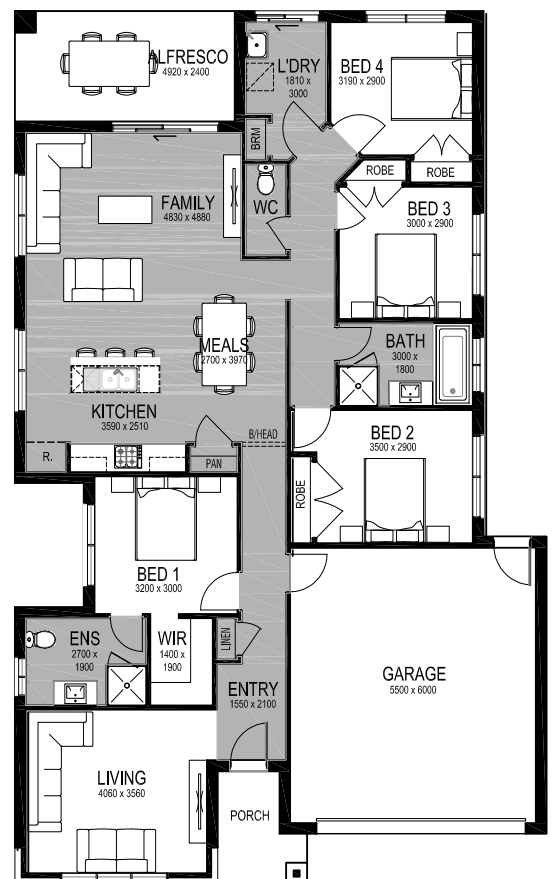


## LOT 5 BAYSWOOD CIRCUIT, REDLAND BAY BAY RIDGE ESTATE

HOUSE AREA	199.92m <sup>2</sup>	HOUSE PRICE	\$254,790
LAND AREA	424m <sup>2</sup>	LAND PRICE	\$325,000
TITLE RELEASE	MAY 20	TOTAL PRICE	\$579,790

### TURNKEY INCLUSIONS

-  Full turnkey package
-  Fixed price (including site costs)
-  Split cycle cooling system to family room
-  Venetians and Holland blinds to all windows
-  Quality carpet and tiled flooring throughout
-  Fully landscaped front and rear gardens, including coloured concrete driveway, path and rear outdoor living area, fences to sides and rear, clothesline and letterbox



NOTE: Minimum lot size may vary depending on the estate design guidelines and building envelopes.  
 Floor plan areas may vary slightly in size depending on facade selection. Floor plans shown are not to scale.  
 Floor plan may be mirrored to suit garage crossover location.  
 House size based on the Torquay facade.  
 Price effective for 3 months from date of issue

**APLACE**  
BY GLENVILL

MELBOURNE  
480 CHURCH STREET,  
CREMORNE VIC 3121  
P (03) 9573 8393

CONTACT  
APLACESALES@GLENVILL.COM.AU  
APLACEBYGLENVILL.COM.AU